

TEL:.....+47 67 03 00 00

E-mail:.....aim@avinor.no



AIP AIRAC SUP
07/2025
EFF 20 MAR 2025

Publication date: 14 FEB 2025

ENLE – Ny RNP-helikopterprosedyre for Ekofisk L

Erstatter AIP AIRAC SUP 05/2025

Den vedlagte prosedyren, RNP 207, er kun tilgjengelig for Bristow ifm. kontrollflyging.

Vedlagt er følgende dokumenter:

1. RNP 207
2. RNP 207 veipunktkoordinater
3. RNP 207 anbefalt koding
4. RNP 207 FAS DB

- Vedlegg -

ENLE – New RNP helicopter procedure for Ekofisk L

Replaces AIP AIRAC SUP 05/2025

The attached procedure, RNP 207, is only available for Bristow in order to perform flight validation.

Attached are the following documents:

1. RNP 207
2. RNP 207 waypoint coordinates
3. RNP 207 recommended coding
4. RNP 207 FAS DB

- Attachment -

ENLE
Ekofisk L

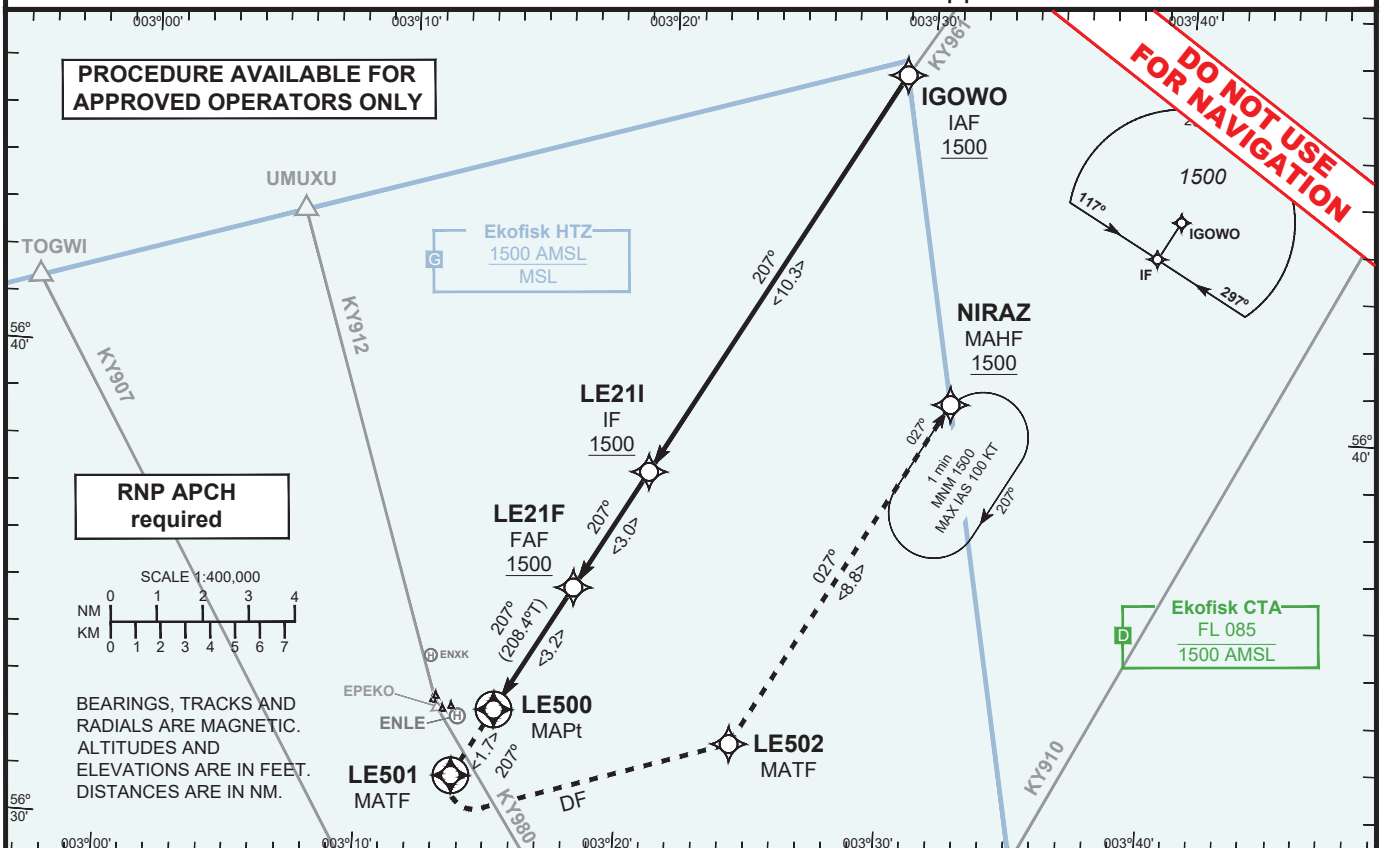
EKOFISK COMPLEX
RNP 207

Ekofisk INFO 130.550	Ekofisk ATIS 127.200	POLARIS CTRL 125.880			EGNOS Ch 4000 E21A
Final Apch Crs 207°	Procedure Alt LE21F (FAF) 1500 (1304)	DA(H) LPV LE500 250 (54)	MDA(H) LNAV LE500 600 (404)	Heliport FATO Elev VAR 196 FT 2°E (2024)	QNH: Ekofisk INFO Ekofisk ATIS

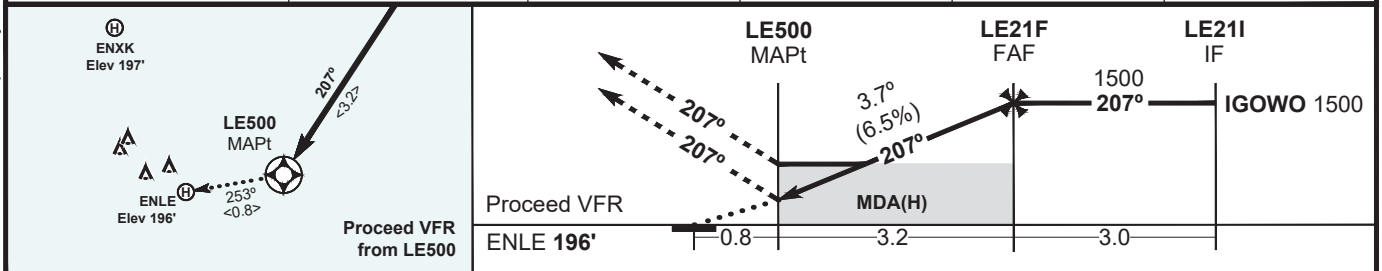
MISSED APCH: Climb straight ahead to LE501 and turn left direct to LE502. Then turn left to NIRAZ and join the holding at or above 1500'.

CONTINGENCY PROC: **TBD**

NOTES: Procedure inside Ekofisk HTZ (Class G) and partially inside Ekofisk CTA (Class D).
Vessels are not considered in LPV final and initial missed approach assessment.



PROFILE Vertical Profile 3.7°	NM to LE500	1.0	2.0	3.0	FAF
	ALT	650	1040	1440	1500



		<i>W/O ships returns</i>			<i>With ships returns</i>			
LPV	DA (H)	250 (54)			500 (304)			
LNAV	MDA (H)	600 (404)			600 (404)			
VIS VFR	Gnd speed-Kts	50	60	70	80	90		
	Descent Gr (ft/min) FAF-MAPt 3.7° (6.5%)	330	400	460	530	590		

CHANGE: New procedure, Polaris CTRL frequency, editorials.

WAYPOINT LIST			
Procedure:	ENLE - PinS Approach - RNP 207		Version: 1.0
	WP ID	Latitude	Longitude
	LE500	563251.21N	0031454.75E
	LE21F	563537.82N	0031738.11E
	LE21I	563815.73N	0032013.38E
	IGOWO	564716.78N	0032908.35E
	LE501	563121.36N	0031326.81E
	LE502	563231.63N	0032412.60E
	NIRAZ	564013.97N	0033149.50E

CODING TABLES

Procedure Name: ENLE - PinS Approach - RNP 207 **Version:** 1.0

IAF/Transition Name: IGOWO

INSTRUMENT FLIGHT PROCEDURE FROM IGOWO

PT	W/P ID	Over Fly	Fix role	TD	VAR	CRS Val (°)	CRS Type	TIME (s)	DIST (NM)	MNM ALT (ft)	MAX ALT (ft)	IAS MAX (kt)	VRT ANG	NAV PERF (NM)	RADIUS (NM)	ARC CTR ID
IF	IGOWO		IAF		1.9					1500				RNP APCH		
TF	LE211		IF		1.9	208.6	TT		10.3	1500				RNP APCH		
TF	LE21F		FAF		1.9	208.5	TT		3.0	1500				RNP APCH		
TF	LE500	Y	MAPt		1.9	208.4	TT		3.2	250			-3.7	RNP APCH		
TF	LE501	Y	MATF		1.9	208.4	TT		1.7					RNP APCH		
DF	LE502		MATF	L	1.9									RNP APCH		
TF	NIRAZ				1.9	28.5	TT		8.8	1500				RNP APCH		
HM	NIRAZ		MAHF	R	1.9	28.5	TT	60.00		1500		100		RNP APCH		

Input data

Operation Type	0
SBAS Provider	1 (EGNOS)
Airport Identifier	ENLE
Runway	21
Runway Letter	0 (None)
Approach Performance Designator	0
Route Indicator	
Reference Path Data Selector	0
Reference Path Identifier	E21A
LTP/FTP Latitude	563228.4875N
LTP/FTP Longitude	0031432.5030E
LTP/FTP Ellipsoidal Height (metres)	44.1
FPAP Latitude	563111.8390N
Delta FPAP Latitude (seconds)	-76.6485
FPAP Longitude	0031317.5305E
Delta FPAP Longitude (seconds)	-74.9725
Threshold Crossing Height	79.5
TCH Units Selector	0 (feet)
Glidepath Angle (degrees)	3.72
Course Width (metres)	105.00
Length Offset (metres)	0
HAL (metres)	40.0
VAL (metres)	50.0

Output data

Data Block	10 05 0C 0E 05 15 00 00 01 31 32 05 8F CE 43 18 6E 37 64 01 B9 15 2F A9 FD 47 B6 FD 1B 03 74 01 64 00 C8 FA 94 98 45 79
Calculated CRC Value	94984579

Required Additional Data

ICAO Code	EN
LTP/FTP Orthometric Height (metres)	0.0

EUROCONTROL FAS DB tool Version 3.2.1