

TEL:.....+47 67 03 00 00

E-mail:.....aim@avinor.no



AERONAUTICAL INFORMATION
MANAGEMENT
P.O. BOX 150
NO-2061 GARDERMOEN

AIP AIRAC SUP
31/2024
EFF 28 NOV 2024

Publication date: 11 OCT 2024

ENHV - Oppdaterte prosedyrer for Honningsvåg lufthavn, Valan

Vedlagt denne AIP AIRAC SUP finnes RNP-A og RNP-D-prosedyrer ved Honningsvåg lufthavn, Valan, komplett med kart, anbefalt koding og liste med signifikante punkter.

De vedlagte prosedyrene, RNP-A og RNP-D, erstatter tilsvarende prosedyrer som er publisert i AIP Norge.

- Vedlegg -

ENHV - Updated procedures for Honningsvåg airport, Valan

Attached to this AIP AIRAC SUP are RNP-A and RNP-D procedures at Honningsvåg airport, Valan, complete with chart, recommended coding and significant points pages.

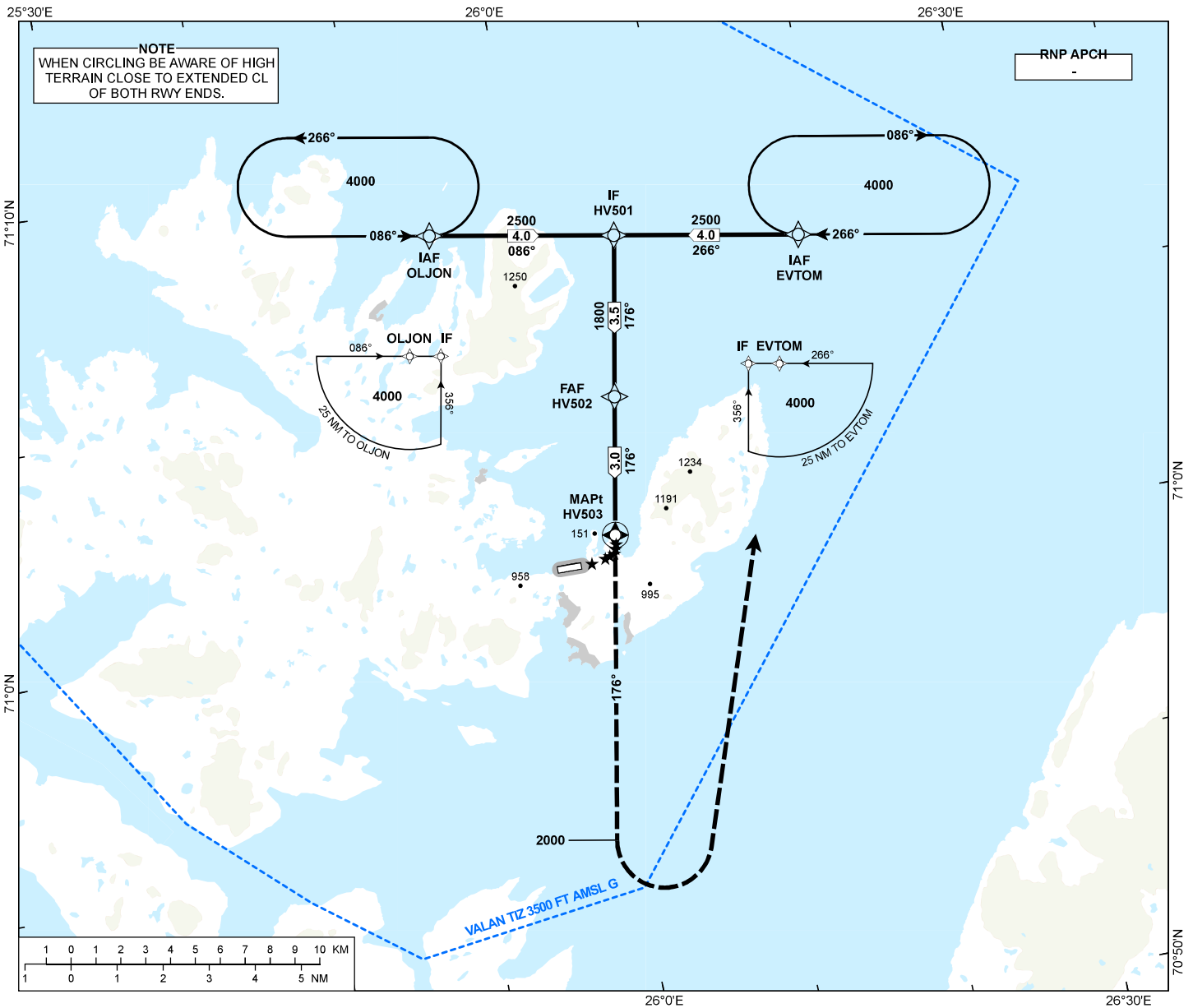
The attached procedures, RNP-A and RNP-D, replace the equivalent procedures currently published in AIP Norway.

- Attachment -

INSTRUMENT APPROACH CHART - ICAO

**HONNINGSVÅG
VALAN
RNP-A**

AFIS: 119.800		AD ELEV: 45	
VDF AVBL.			
CIRCLING HGT RELATED TO AD ELEV			
DIST IN NM. ELEV, ALT AND HGT IN FT			
SCALE 1:250 000		VAR 14° E (2020)	
TRANSITION ALTITUDE			7000

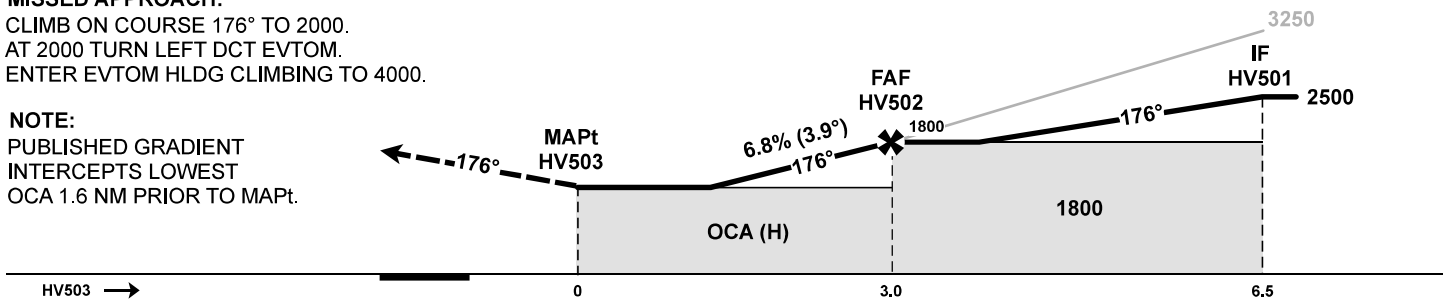


DIST TO HV503	9	8	7	6	5	4	3	2
ALT (HGT)	-	-	-	-	-	-	-	1390 (1345)

MISSED APPROACH:

CLIMB ON COURSE 176° TO 2000.
AT 2000 TURN LEFT DCT EVTOM.
ENTER EVTOM HLDG CLIMBING TO 4000.

NOTE:
PUBLISHED GRADIENT INTERCEPTS LOWEST OCA 1.6 NM PRIOR TO MAPt.



CAT OF ACFT		A	B	C	D
OCA (H) STRAIGHT - IN		-	-	-	-
		-	-	-	-
CIRCLING	LNAV	1230 (1185)*			-

NOTE: CIRCLING N OF AD ONLY.*120KT IAS/25° BANK REQUIRED DURING CIRCLING.

CHANGES: COMPLETE REVISION.

ENHV RNP A - RECOMMENDED CODING

SN	PD	WI	Fly-over	°M (°T)	MAG VAR	DIST (NM)	REC NAVAID	TD	ALT (FT)	Speed (KT)	VPA (°)/TCH (FT)	ARC CENTRE RADIUS (NM)	RNP (NM)
010	IF	EVTOM	-	-	-14.0	-	-	-	A4000+	-	-	-	1.0
020	TF	HV501	-	-	-14.0	4.0	-	-	A2500+	-	-	-	1.0
010	IF	OLJON	-	-	-14.0	-	-	-	A4000+	-	-	-	1.0
020	TF	HV501	-	-	-14.0	4.0	-	-	A2500+	-	-	-	1.0
030	TF	HV502	-	-	-14.0	3.5	-	-	A1800+	-	-	-	1.0
040	TF	HV503	Y	-	-14.0	3.0	-	-	-	-	-3.9/-	-	0.3
050	CA	-	-	176 (190)	-14.0	-	-	-	A2000	-	-	-	1.0
060	DF	EVTOM	-	-	-14.0	-	-	L	-	-	-	-	1.0
070	HM	EVTOM	-	266 (280.4)	-14.0	1 MIN	-	R	A4000	-	-	-	1.0

Note: Recommended coding is based on ARINC 424 and is provided solely to indicate which procedure design protection areas were used in the Instrument Flight Procedure Design process.

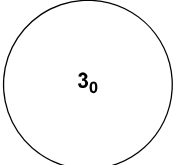
ENHV RNP A - SIGNIFICANT POINTS

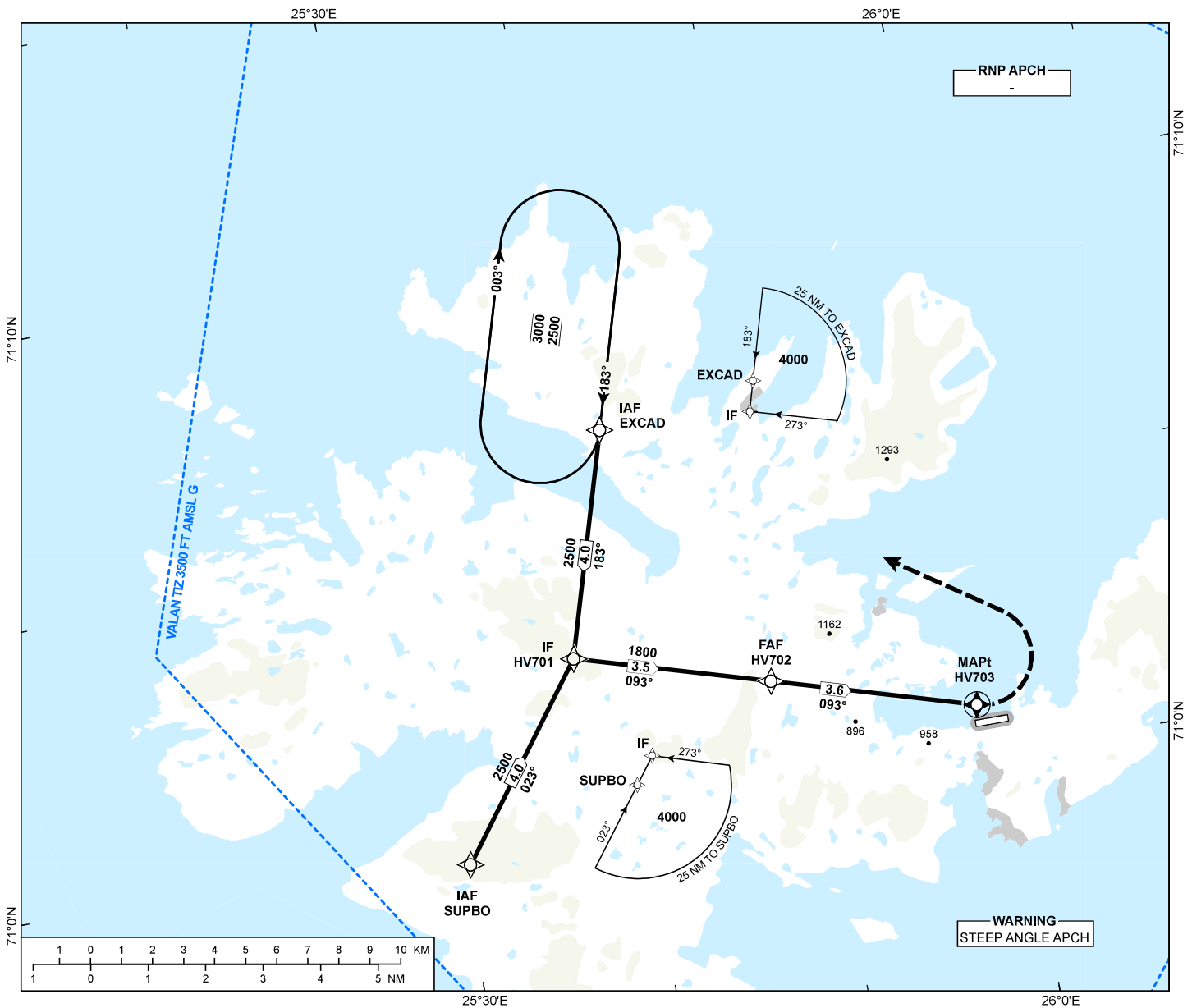
Name	Latitude	Longitude
EVTOM	710645.26N	0261756.34E
HV501	710728.17N	0260550.28E
HV502	710402.36N	0260355.70E
HV503	710105.92N	0260218.03E
OLJON	710810.31N	0255343.27E

CHANGES: NEW PAGE

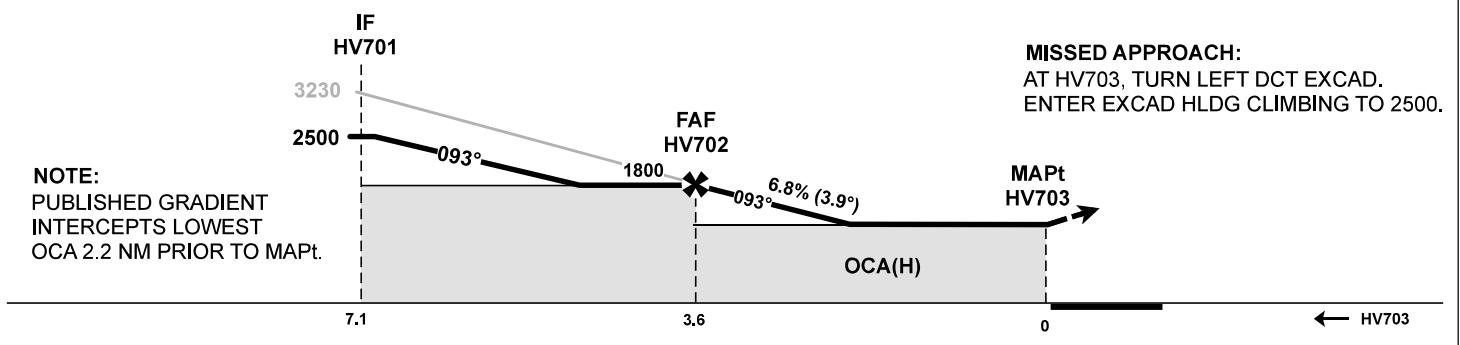
INSTRUMENT APPROACH CHART - ICAO

HONNINGSVÅG VALAN RNP-D

 <p>MSA 25 NM ARP</p>	AFIS: 119.800	AD ELEV: 45
	VDF AVBL.	
	CIRCLING HGT RELATED TO AD ELEV	
	DIST IN NM. ELEV, ALT AND HGT IN FT	
	SCALE 1:200 000	VAR 14° E (2020)
TRANSITION ALTITUDE 7000		



DIST TO HV703	10	9	8	7	6	5	4	3
ALT (HGT)	-	-	-	-	-	-	-	1560 (1536)



CAT OF ACFT		A	B	C	D
OCA (H) STRAIGHT-IN		-	-	-	-
		-	-	-	-
CIRCLING	LNAV	1230 (1185)			-

NOTE: CIRCLING N OF AD ONLY.*120KT IAS/25° BANK REQUIRED DURING CIRCLING.

CHANGES: COMPLETE REVISION.

ENHV RNP-D - RECOMMENDED CODING

SN	PD	WI	Fly-over	°M(°T)	MAG VAR	DIST (NM)	REC NAV AID	TD	ALT (FT)	Speed (KT)	VPA(°)/TCH(FT)	ARC CENTRE RADIUS (NM)	RNP (NM)
010	IF	EXCAD	-	-	-	-	-	-	A4000+	-	-	-	1.0
020	TF	HV701	-	-	-14°	4.0	-	-	A2500+	-	-	-	1.0
010	IF	SUPBO	-	-	-	-	-	-	A4000+	-	-	-	1.0
020	TF	HV701	-	-	-14°	4.0	-	-	A2500+	-	-	-	1.0
030	TF	HV702	-	-	-14°	3.5	-	-	A1800+	-	-	-	1.0
040	TF	HV703	Y	-	-14°	3.6	-	-	-	-	-3.9 / -	-	0.3
050	DF	EXCAD	-	-	-	-	-	L	A2500	-	-	-	1.0
060	HM	EXCAD	-	183 (196.6)	-14°	1 MIN	-	R	A2500+	-	-	-	1.0

Note: Recommended coding is based on ARINC 424 and is provided solely to indicate which procedure design protection areas were used in the Instrument Flight Procedure Design process

ENHV RNP D - SIGNIFICANT POINTS

Name	Latitude	Longitude
EXCAD	710644.12N	0254113.35E
HV701	710255.00N	0253743.48E
HV702	710156.09N	0254751.11E
HV703	710054.03N	0255824.08E
SUPBO	705943.06N	0253025.79E

CHANGES: NEW PAGE